



CHAMPION

C O M P O S I T E

CP

COMPOSITE DRY FREIGHT VAN



Great Dane

MAKING MAXIMUM
PAYLOADS POSSIBLE

CHAMPION CP
COMPOSITE

The advantage of the Champion CP

Designed for maximum cubic capacity, cargo protection and durability, the Champion CP delivers strength from the inside out. With sidewall panels more puncture-resistant than comparable sheet-and-post trailers and a true snag-free interior, the Champion CP delivers increased productivity.

Let us show you how the Champion CP delivers optimal performance and a greater return on your investment.



Great Dane

The Champion CP dry freight van offers superior strength and durability to withstand the demands of today's dynamic trucking operations.



■ Dependable Design

High-strength extruded aluminum top and bottom rails combine with durable composite-steel panels for optimal performance.

■ Front End Protection

The lower front of the trailer is protected from corrosion by a stainless steel front bottom rail. The upper coupler is constructed with galvanized components and additional rust-preventative coatings for a long-lasting, strong and durable connection.

■ Premium Landing Gear

Great Dane's Model 60 landing gear features all-bolted construction for ease of repair and maintenance, and is strongly braced with angled bracing both fore and aft and with K-bracing between the legs.

■ Durable Roof Construction

Aluminum .040" roof sheet is tension-mounted and joined to the top rail with an extruded aluminum J-molding for durability and longevity, as well as resistance to edge abrasion.

■ Interior Construction

More than 101" of interior provides maximum cubic capacity. Logistic posts are recessed at panel connections with smooth interior rivet heads for a true snag-free interior lining.

■ EnduroGuard Rear Frame

combines galvanized steel with stainless steel to create an effective barrier against corrosion that delivers enhanced durability and enduring appearance throughout the life of the trailer.

■ Door Construction

Composite swing-type rear doors with galvanized steel exterior and interior skins have a resilient polymer core that helps eliminate internal corrosion common with wood-core doors.

■ LED Lamps and 10-Year Wiring Harness

100% LED Grote lamps and exclusive dual-intensity ID cluster lights are designed to improve visibility and extend service life. This all-LED system comes standard with the fully modular, maintenance-free Long Life Light System backed by a 10-year warranty.

■ Fuel Efficient Tires

Bridgestone R-197 Ecopia tires feature new IntelliShapes™ sidewall design that removes weight without sacrificing durability.

■ Premium Wheel End System

Stemco's Platinum Performance Plus Wheel End System features an exclusive 6-year limited warranty.



The Champion CP design combines increased cubic capacity with a true snag-free interior for maximum durability.



CP

■ **More than 101" of interior** For maximum cubic capacity, logistic posts are recessed at panel connections with smooth interior rivet heads for a true snag-free interior lining.

■ **Front Wall Protection** A plywood front wall lining is standard for protection against daily wear and tear. For additional protection Composite, SSL panels, and PunctureGuard linings are available as options. (Composite shown)



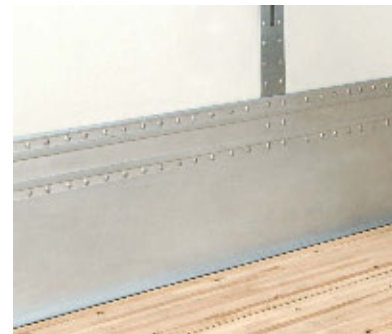
■ **Rear Frame Reinforcement Gussets** minimize racking and ensure that the frame remains square throughout the life of the trailer utilizing 0.25" steel to reinforce the rear header to top rail connection, maintaining a 110" inside height the full length of trailer.



■ **Sidewall Protection** A full-length, one-piece extruded aluminum bottom rail with integral scuffband design adds strength and rigidity and helps reduce sidewall bulging. An additional 6" galvanized steel scuff is installed above the 7" aluminum interior bottom rail to provide extra protection from forklift damage.



■ **Roof System** features a tension-mounted aluminum roof sheet permanently bonded to galvanized, anti-snag roof bows, and then secured with two fasteners to the side rails for reinforcement.



■ **High-Base Rail option** improves sidewall durability with 15" of extreme sidewall protection. The integral extruded aluminum rail protects the lower wall against unsightly scarring of daily wear and tear.



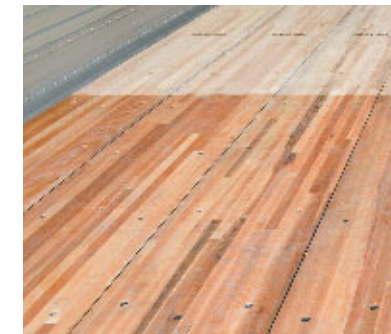
■ **110" Full Height** throughout trailer interior. No wedge necessary.



■ **Post Spacing** is standard on 48" centers and optional on 24" centers.



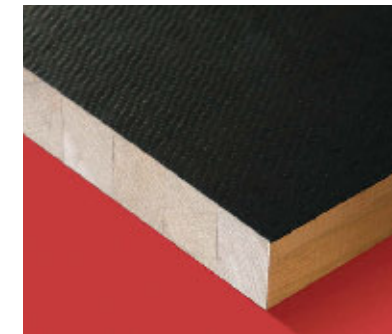
■ **Durable Floor System** provides strength in key high stress areas. A net 1.38" laminated hardwood floor is secured with 2 screws in an alternating pattern, and is available with 3 screws for added strength.



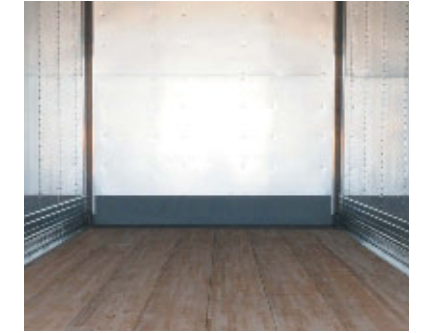
■ **Waxin** is an optional floor treatment that protects hardwood floors against the harshest outside conditions by penetrating the surface of hardwood with solid paraffin wax, creating a virtually waterproof barrier of protection. Available over every inch of the trailer floor or on just the rear 8 feet where the greatest exposure to elements occur.



■ **Full-Width Threshold Plate** is standard 3" smooth and provides easy transition into the interior of the trailer. Available in various widths and with a tread plate surface. (option shown)



■ **PuR** undercoating is an optional floor protection feature that acts as a moisture barrier on the underside of trailer floors, increasing the floor's durability and reducing maintenance costs.



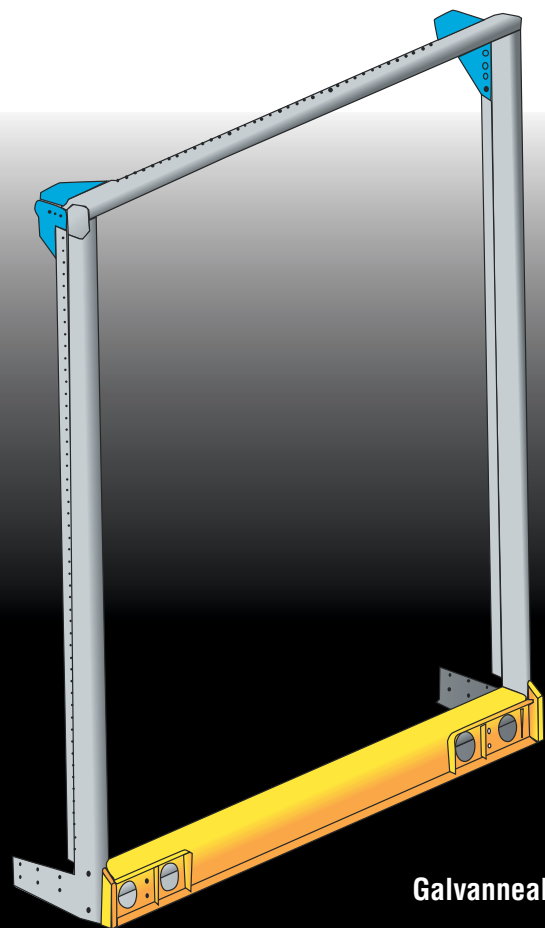
■ **Interior Bulkhead Option** is available in 12" smooth steel and is welded to the upper coupler for additional protection against forklift and cargo damage.



■ **Optional Roll-Up Door** is available for operations that require loading in a limited space. A sturdy, reinforced roll-up rear door frame provides added security.



The Standard Rear Frame for Great Dane Champion Dry Vans



- Galvanneal
- Stainless Steel
- Carbon Steel

EnduroGuard™

The structurally superior rear frame design that fights off corrosion

Engineered with a combination of galvannealed carbon steel and stainless steel components, EnduroGuard delivers an exceptional level of corrosion protection.

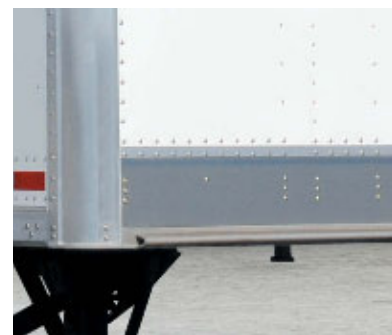
The Advantages of EnduroGuard

- Excellent corrosion resistance
- Proven durability and strength
- Stainless steel components in high-impact areas
- Unlike galvanized steel, resists scaling, flaking and discoloration

EnduroGuard rear frames not only add value, but deliver enhanced durability and lasting appearance throughout the life of a Champion dry van.



Scan this QR code to watch our informative EnduroGuard video, or visit our website at www.greatdanetrailers.com/enduroguard for more details.



■ **Front End Protection** from impact and corrosion is provided by a stainless steel front bottom rail and stainless fasteners. An optional weld-on stainless steel rolled lip protects the upper coupler from fifth-wheel impact.



■ **Air and Electrical Connections** are mounted to the front wall on an aluminum mounting channel for easy access and reduced maintenance. A large protector allows for easy access to air and electrical lines.



■ **Great Dane Model 60 Landing Gear** has a lift capacity of 55,000 lbs. and uses constant mesh to keep gears engaged for smooth shifting. The mount spreads the load over five crossmembers and steel gussets ensure extra support, stability, and strength.



■ **Painted Black Hubs & Powder-Coated Wheels** improve appearance over the life of the trailer. Powder-coated wheels provide enhanced corrosion protection and durability, while reducing maintenance and refurbishing frequency.



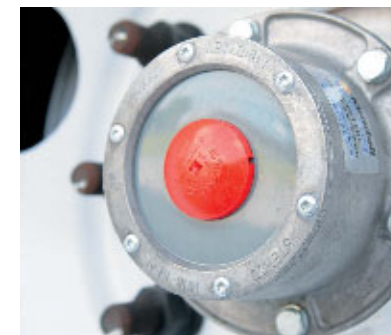
■ **Anti-Theft Secure-Cam Feature** is standard on the curbside door, allowing the lock rod to be secured with a padlock directly to the lower keeper.



■ **LED Exterior Light Package** features Grote's MicroNova DOT lamps and dual-intensity ID cluster lights. An option for five header lights with outer turn signal is available. Also standard is the industry's best wiring harness, the Long Life Light System backed by a 10-year warranty. This sealed harness prevents moisture intrusion, allows for custom wiring, and is extremely durable.



■ **Extruded Aluminum Hinge** allows doors to open fully to sides and break away in the event of severe impact.



■ **Stemco's Platinum Performance Plus Wheel End System** features an exclusive 6-year limited warranty and includes Guardian HP oil seals, PRO-TORQ spindle nuts, and integrated Sentinel hub caps.



Champion CP Pup Trailer



Pup Trailer Options



■ **Post Spacing Options** are available on 16" and 24" centers.



■ **Wedge Option** design is available for increased rear frame opening height.



■ **Pintle Hooks** and pintle hook accessories are available for long combination vehicles.



■ **Optional Roll-Up Rear Door** is available for operations that require loading in a limited space. A sturdy, reinforced roll-up rear door frame provides added security. Stainless steel rear frame is optional.

Great Dane

Exterior Options



■ **Wheel Options** A variety of wheel selections to help increase payload and fuel savings are available.

- Aluminum Wheels
- Wide-Base Steel Wheels
- Wide-Base Aluminum Wheels



■ **Tire Options** Optional tire brands are available in dual- and wide-base styles. EPA SmartWay®-verified and CARB compliant brand options also available.



■ **Automatic Tire Inflation Systems** help extend tire life and increase fuel efficiency by using compressed air from the tractor to maintain tire pressure settings during operation. Multiple tire inflation systems are available as options.



■ **Air Disc Brakes** offer reduced stopping distances when compared to drum brakes and help reduce brake fade. A variety of options are available.



■ **Galvanized Component Options** include crossmembers and tire carriers.



■ Aerodynamic Options

Industry's widest selection of aerodynamic skirts and other devices are available.



■ Great Dane delivers EPA Certified SmartWay® trailer systems and components

Customers committed to measuring and improving the efficiency of their freight operations can adopt a range of trailer systems and components that can help to significantly lower emissions and reduce fuel consumption using aerodynamic and tire technologies approved by the U.S. Environmental Protection Agency's SmartWay Transport Partnership.



Suspension Options



■ Lightweight Suspension Package

Optimized for dry-freight sliding tandems, the Hendrickson HKANT-40K Air-Ride Suspension provides weight savings and reliable performance for a smoother ride and cargo protection. This system also features long-life Tri-Functional pivot bushings for a smooth ride and Quik-Align for fast and easy axle alignments.



■ Heavy-Duty Air-Ride Suspension Package

Available for dry freight and specialty vans and refrigerated trailers. The VANTRAAX HKANT – 46K features a tandem slider tailor-made for heavy-duty applications and incorporates the patented QUIK-DRAW pin activation system, high-strength main rails, and "K" braces for durability and frame strength.





CorroGuard is the most cost-effective corrosion solution available. It not only looks good, but saves you money and adds life to your trailer.

CorroGuard is a spray-in-place thermoplastic coating engineered for superior long-term protection from road abrasion, impact, and corrosion.

The Advantages of CorroGuard

- Highest level of corrosion, impact and abrasion protection available
- Provides the most complete coverage of suspension systems and landing gear
- Textured surface and black color offers significantly better appearance compared to galvanizing and other undercoatings
- Highest physical properties including tensile, tear, and elongation
- Most cost effective solution that adds life to your trailer



Tough as nails, CorroGuard offers excellent chemical and corrosion resistance as well as superior impact resistance to withstand the harshest conditions on today's highways.



Scan this QR code to watch our informative CorroGuard video, or visit our website at www.greatdanetrailers.com/corroguard for more details.



UNRIVALED PERFORMANCE.
FROM THE WRENCH TO THE ROAD.



Why trust the service of your premium quality Great Dane trailer to just anyone?

Our technicians know Great Dane trailers better than anyone. That's why service at your Great Dane branch or dealer offers more than just simple repairs. Unlike independent shops, Great Dane locations are staffed with trained technicians knowledgeable about the most current products and repair techniques. Plus, our direct connection to the factory ensures you get the parts you need when you need them.

Drive away with more confidence — Great Dane Genuine Parts and Authorized Service.



ADVANTEDGE
National Aftermarket Parts & Service Program

Support — Where you need it, When you need it.

Great Dane's AdvantEDGE Program connects you to a nationwide network of service locations to make your operations more reliable and easier to manage. Get peace of mind with 24-hour emergency road service, parts price protection, controlled ordering and invoicing, and much more.

Enroll free online or at any participating Great Dane branch or full-service dealer.
Learn more at www.greatdanetrailers.com/advantedge



CP

MAKING
**MAXIMUM
PAYLOADS**
POSSIBLE

Great Dane looks forward to assisting you with all your trailer needs.

We're dedicated to serving you now and in the future. Whether you are seeking new or used trailers, or convenient maintenance or service, we're here for you. Let us prove it.



Great Dane

DRIVE AWAY WITH MORE

CP



Great Dane

www.greatdanetrailers.com

Great Dane
602 E. Lathrop Avenue
Savannah, GA 31415
www.greatdanetrailers.com

Great Dane and the oval are registered trademarks of Great Dane Limited Partnership. © 2014